

Custom ROMs



LineageOS



/e/OS



Ubuntu Touch



PostmarketOS

Arbeitsschritte

- Vorbereitung: adb + fastboot installieren, Downloads, Entwickleroptionen
- Bootloader entsperren/ Rooten (Details herstellerabhängig)
- Recovery-System installieren (TWRP)
- In TWRP:
 - Backup des Systems
 - Custom ROM installieren
- System einrichten (u.a. Appstores)

Vorbereitung

- Auf dem PC: Sudo apt-get adb fastboot
- Downloads:
 - TWRP.zip (modellspezifisch)
 - Customrom.zip (modellspezifisch)
 - ggf. GApps 🙄
 - ggf. weitere (s. jew. Anleitung)
- Auf dem Device: Entwickleroptionen aktivieren, USB-Debugging + ggf. OEM-Unlock aktivieren; ggf. Konten löschen

Bootloader entsperren

- Das ist i.d.R. der schwerste Part und der Weg ist geräte- bzw. herstellerabhängig
- In den Installationsanleitungen von /e/OS und LineageOS ist ggf. auf die Herstellerseiten verlinkt (bspw. bei Sony, Motorola u.a. muss „Unlock Code“ generiert werden)



TWRP flashen

- in Fastboot-Modus booten
- fastboot devices
- fastboot flash dateipfad/recovery
recoveryfilename.img

System-Backup

CPU: 25 °C 8:08 Battery: 40% CPU: 27 °C 8:08 Battery: 40% CPU: 41 °C 8:09 Battery: 40%

Team Win Recovery Project 3.3.0-0 Backup Storage: Micro SD card (70286 MB) Backing Up System Partition

BACKUP OPTIONS ENCRYPTION

Install Wipe Backup Restore Mount Settings Advanced Reboot

Name: (Auto Generate)

Select Partitions to Backup:

- Boot (64MB)
- Cache (22MB)
- Recovery (64MB)
- System (1664MB)
- Vendor (745MB)
- System Image (3072MB)
- Vendor Image (1024MB)
- Data (excl. storage) (6891MB)

Select Storage Refresh Sizes

Swipe to Backup

```
Data successfully decrypted, new block device: '/dev/block/dm-0'
Updating partition details...
...done
Successfully decrypted with default password.
Updating partition details...
...done
Full SELinux support is present.
MTP Enabled
Screenshot was saved to /external_sd/Pictures/Screenshots/Screenshot_2020-02-18-08-06-50.png
Screenshot was saved to /external_sd/Pictures/Screenshots/Screenshot_2020-02-18-08-08-31.png
Screenshot was saved to /external_sd/Pictures/Screenshots/Screenshot_2020-02-18-08-46.png
Updating partition details...
...done
* Total number of partitions to back up: 3
* Total size of all data: 8619MB
* Available space: 70286MB
[BACKUP STARTED]
* Backup Folder: /external_sd/TWRP/BACKUPS/93d53765/2020-02-18
Backing up System...
Screenshot was saved to /external_sd/Pictures/Screenshots/Screenshot_2020-02-18-08-09-09.png
```

Progress: 2293 of 3048 files, 75% 1159MB of 8619MB, 13%

Cancel

System-Backup

CPU: 25 °C 8:08 Battery: 40% CPU: 27 °C 8:08 Battery: 40% CPU: 41 °C 8:09 Battery: 40%

Team Win Recovery Project 3.3.0-0

Backup
Storage: Micro SD card (70286 MB)

Backing Up
System Partition

BACKUP OPTIONS ENCRYPTION

Install Wipe

Backup Restore

Mount Settings

Advanced Reboot

Name:
(Auto Generate)

Select Partitions to Backup:

- Boot (64MB)
- Cache (22MB)
- Recovery (64MB)
- System (1664MB)
- Vendor (745MB)
- System Image (3072MB)
- Vendor Image (1024MB)
- Data (excl. storage) (6891MB)

Select Storage Refresh Sizes

Swipe to Backup

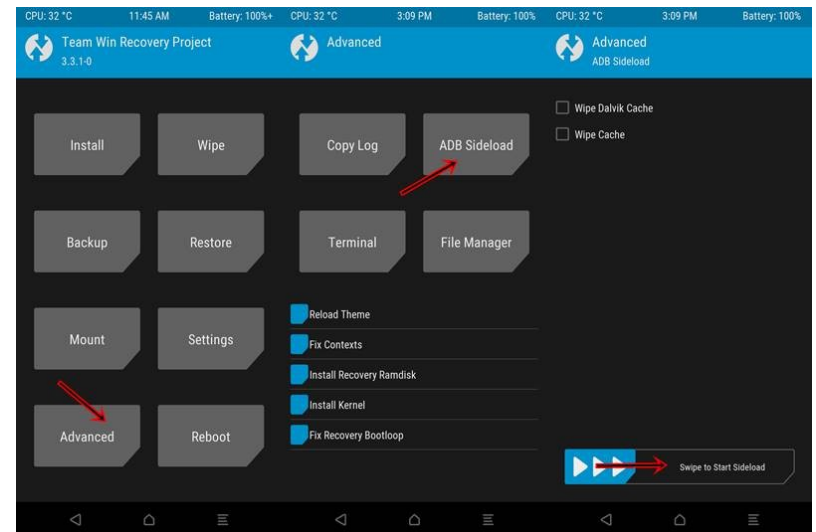
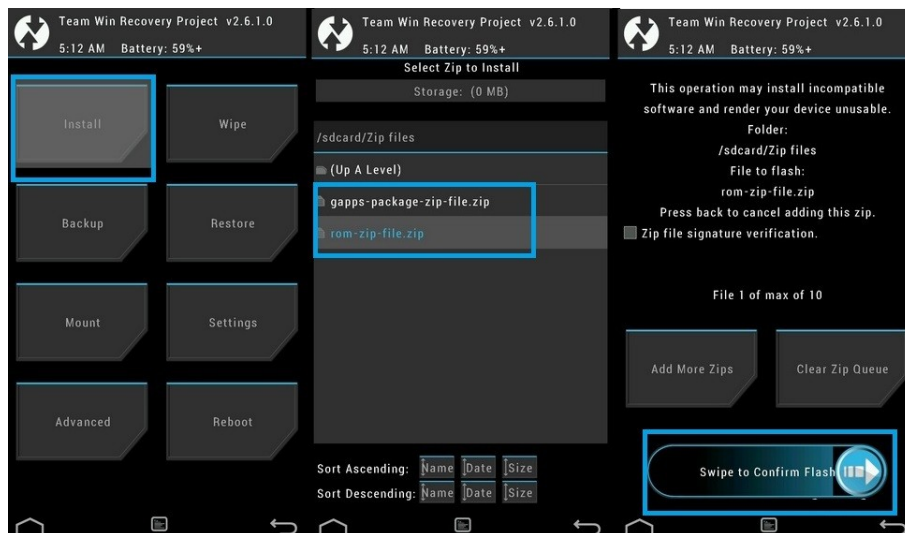
Cancel

```
Data successfully decrypted, new block device: '/dev/block/dm-0'
Updating partition details...
...done
Successfully decrypted with default password.
Updating partition details...
...done
Full SELinux support is present.
MTP Enabled
Screenshot was saved to /external_sd/Pictures/Screenshots/Screenshot_2020-02-18-08-06-50.png
Screenshot was saved to /external_sd/Pictures/Screenshots/Screenshot_2020-02-18-08-08-31.png
Screenshot was saved to /external_sd/Pictures/Screenshots/Screenshot_2020-02-18-08-46.png
Updating partition details...
...done
* Total number of partitions to back up: 3
* Total size of all data: 8619MB
* Available space: 70286MB
[BACKUP STARTED]
* Backup Folder: /external_sd/TWRP/BACKUPS/93d53765/2020-02-18
Backing up System...
Screenshot was saved to /external_sd/Pictures/Screenshots/Screenshot_2020-02-18-08-09-09.png
```

Progress:
2293 of 3048 files, 75%
1159MB of 8619MB, 13%

Installation

- Wipe > Format Data
- Advanced Wipe > Cache + System
- Installation von SD-Karte oder Sideload vom PC



Links

- <https://twrp.me/Devices/>
- <https://doc.e.foundation/devices>
- <https://lineageosroms.com/>
- <https://opengapps.org/>
- <https://microg.org/> (ist in /e/OS integriert, für LineageOS gibt es einen Fork:
- <https://lineage.microg.org/>
- <https://f-droid.org/de/>
- <https://forum.xda-developers.com/>